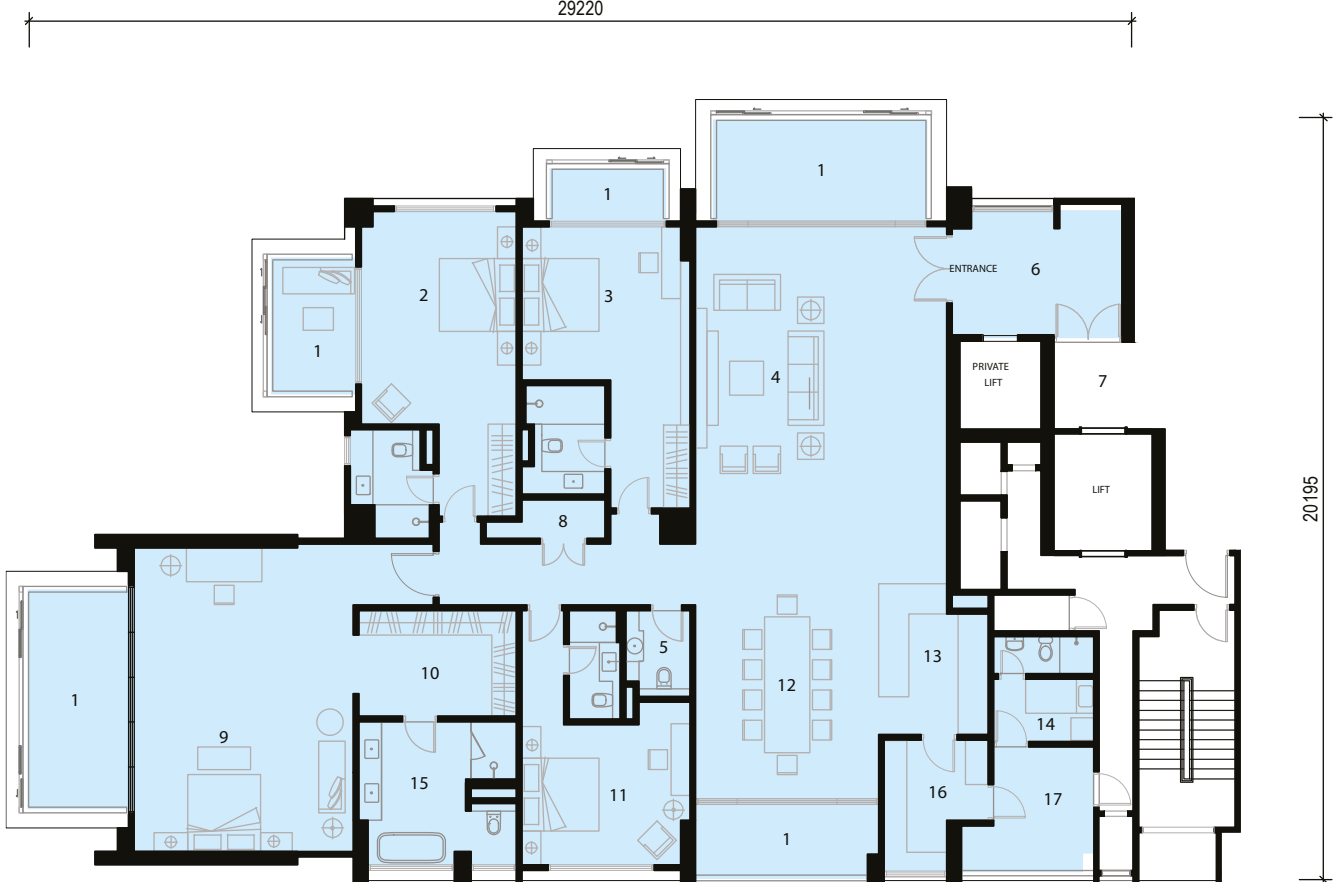


29220

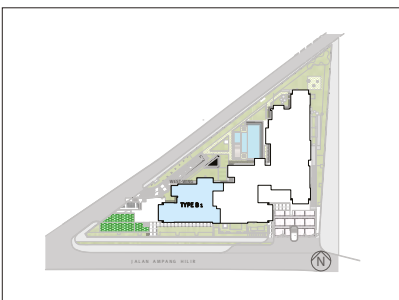


20195

FLOOR PLAN

{ TYPE B1 } 4+1 Bedroom Unit 410 m2 (4,412 sq. ft.)

WEST WING



- ① Balcony
- ② Bedroom 2
- ③ Bedroom 3
- ④ Living
- ⑤ Powder Room
- ⑥ Private Foyer

- ⑦ Guest Lift Lobby
- ⑧ Store
- ⑨ Master Bedroom
- ⑩ Walk-in-wardrobe
- ⑪ Bedroom 4/Family/Study
- ⑫ Dining

- ⑬ Dry Kitchen
- ⑭ Maid
- ⑮ Master Bath
- ⑯ Wet Kitchen
- ⑰ Yard